



Pakistan Railways Locomotive Factory (PLF), Rislapur

-
- **ISO-9001:2008, Quality Management System**
 - **ISO -14001:2004, Environment Management System**
 - **Certification of welders as per AWS D15.1**

Profile

Pakistan Railways Locomotive Factory (PLF)

Factory Commissioned

- 1993

Manufacturing Capacity

- 25 D.E Locos per annum
- On single shift basis



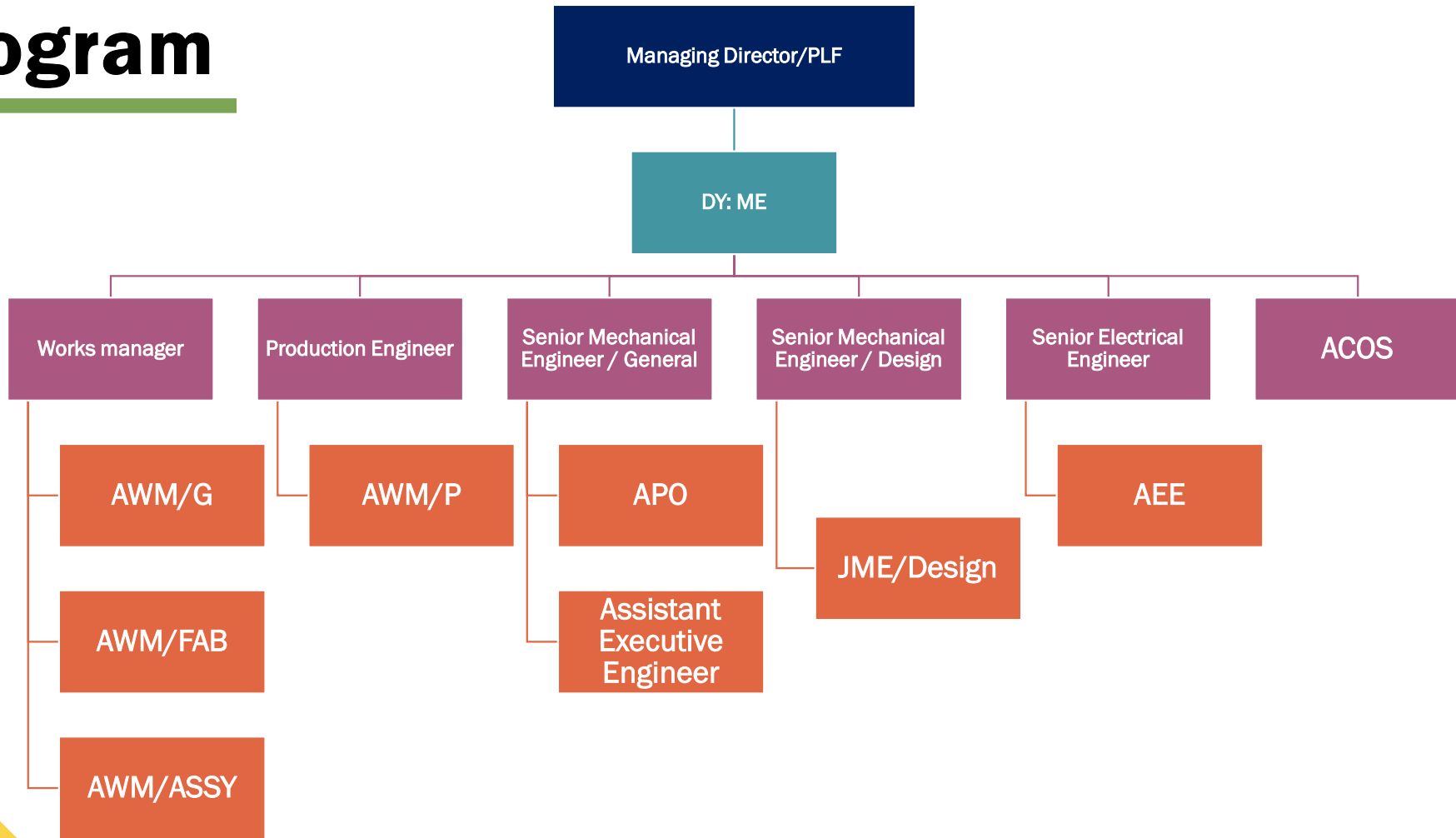
Profile

Pakistan Railways Locomotive Factory (PLF)

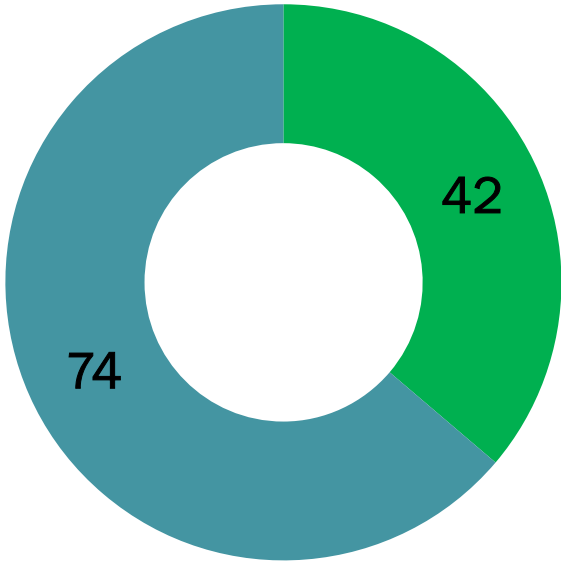
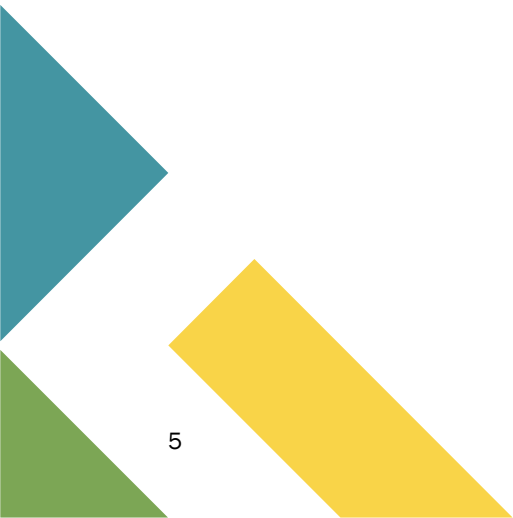
Factory Area

Covered Area	11 acres
Uncovered Area	89 acres
Colony Area	157 acres
Factory Area	100 acres

Organogram



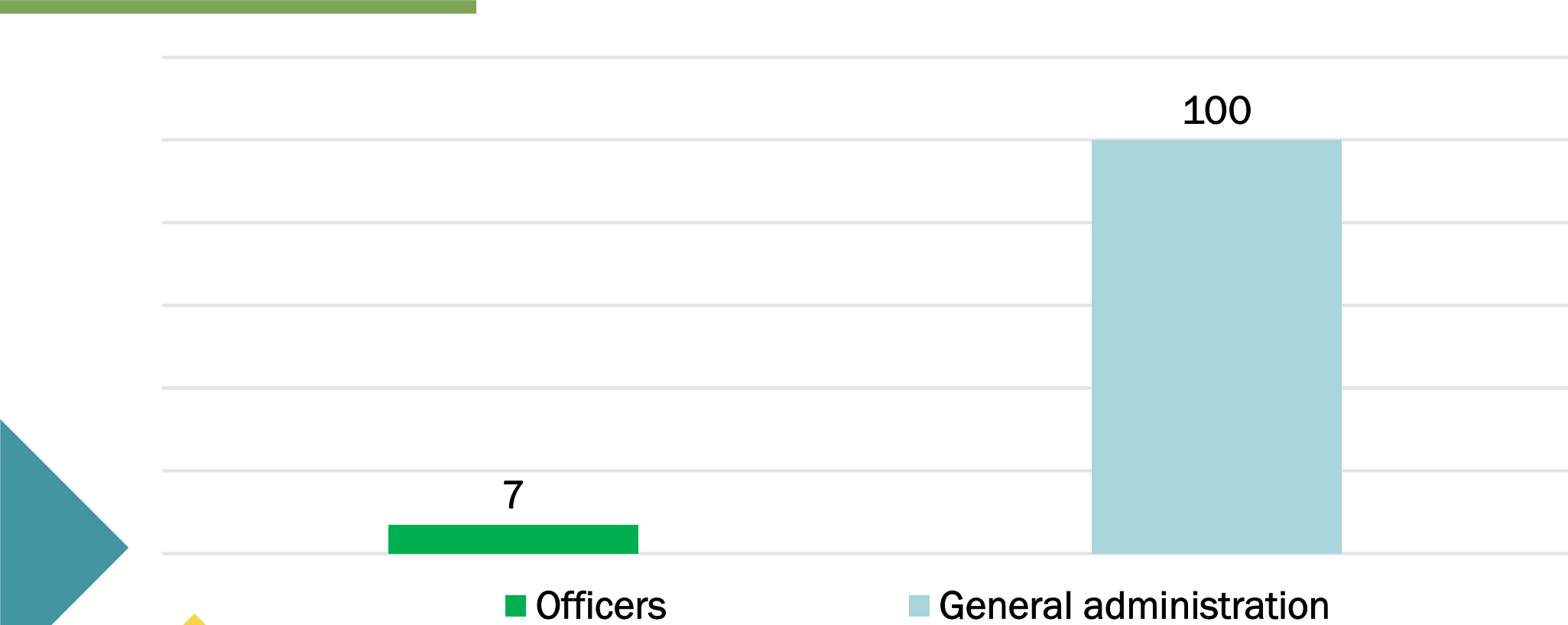
Staff Details



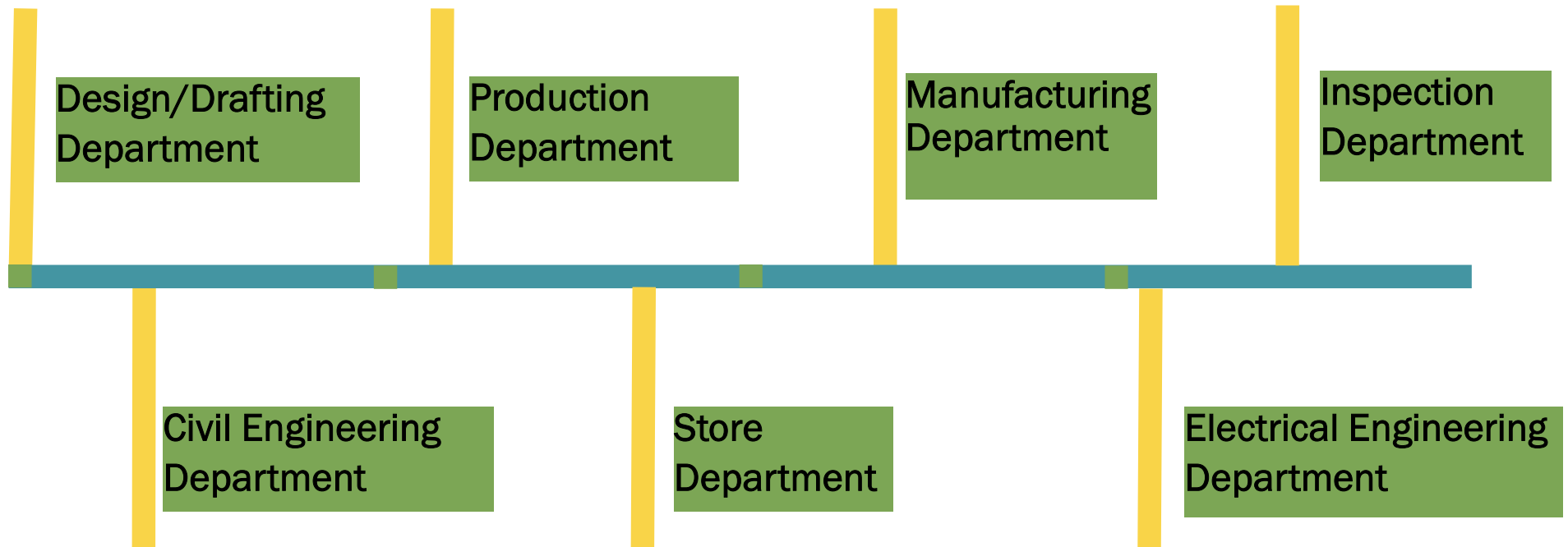
■ Skilled staff

■ Semi skilled staff

Staff Details



Major Departments



Facilities



- Fabrication Shop
- Welding Shop
- Machine Shop
- Rotating Machine Shop
- Assembly Shops
- Testing and Inspection
- Millwright Shop
- Tool Shop
- Wheel Shop
- Training Centre
- Works Department
- Production Department
- Design Department
- Electrical Department
- Store Department
- Civil Engg. Department
- Accounts Department
- Personnel Department
- Security Department
- 132 KV Grid Station

Manufacturing Capacity

Fabrication

- Superstructure
- Under Frame
- Bogie Frame
- Fuel Tank
- Water Tank
- Brake Rigging
- Control Console
- Filter Frames
- Battery Box
- Gear Case
- Cow Catcher
- Painting

Assembling

- Traction Motors (AC/DC)
- Main Alternator and Auxiliary Alternator.
- Control Cabinets (Electric/Electronic Parts)
- Wheel and Axle, Brake Rigging Parts.
- Bogie and Static Running Test
- Complete Locomotive
- Wiring and Testing
- Piping of Cooling, Air, Fuel Oil & Lube Oil Systems.

Completed Projects - New Locomotives

Projects	Nos.	Duration
05 D.E. Locos (2000 hp, Hitachi)	05	1993-1994
18 D.E. Locos (2000 hp, Hitachi)	18	1994-1997
30 D.E. Locos (3000 hp, GE)	20	1999-2001
69 D.E. Locos (2000/3000 hp, Dalian)	54	2003-2008
05 D.E. Locos (3000 hp, Ziyang)	05	2014-2015

Completed Projects - Loco Rehabilitation

Projects	Nos.	Duration
2000 HP/GE (GRU-20)	05	1997-1998
2000 /2400 HP / GE (RGE-20/24)	21 (8+13)	2001-2003

Completed Projects - Freight Wagons

Projects	Nos.	Duration
Conversion of Power Van Shells into Brake Van	40	2015-17
Manufacturing of High-Capacity Hopper Wagons	440	2017-18

Ongoing Projects

- Special Repair of 33 Nos HBU/PHA-20 Class of D.E Locos under the PSDP Project “Special Repair of 100 D.E Locos (New)”
- Recommissioning of 03 Accidental D.E Locos under the PSDP Project “Recommissioning of 05 Accidental D.E Locos”
- Nominated repair of 06 Nos Old D.E Locos

Ongoing Projects

- Rehabilitation of 36 Nos Shells including 72 Nos bogies of German Economy Coaches for CFI
- Rehabilitation of 200 Nos BG-64 Bogies for C&W Shops, MGPR under the project of special repair of 600 Nos Coaches
- Manufacturing of Diesel Spares @ 1800 Nos per month

Transfer of Technology (TOT)



- Drawings for different structure and components
- Technical assistance by M/s. Hitachi, ADTRANZ, G.E AND DALIAN for PHA-20, AGE-30, DPU-20/30 AND ZCUP-30 locomotives
- Foreign training of officers/ officials
- Testing & commissioning

Way Forward



- i. Special repair of AGE-30, PHA-20, GMU-15/30 especially under frame / bogie qualification, superstructure, wiring, piping etc. under SR-100 project (New)
- ii. Manufacturing of 230 Coaches (Project of 820 high-capacity bogie freight wagons)
Tendering is in process.
- iii. Local manufacturing of new Locomotives as per requirement of Pakistan Railways as and when PC-I for manufacture of 300 Nos. DE Locos is approved.

Gallery





**Water Rheostat Plant +
Main Workshop Out Look**



Final Inspection Shed



Wiring Shop



Carbody Painting
Booth



Automatic Profile
(Gas) Cutter



Rainfall testing



Training Centre



Diesel Assembly Shop





**Pakistan Railways
Locomotive Factory
(PLF),**

Thank you

Pakistan Railway Locomotive Factory

Risalpur, Pakistan

Phone#: +92 0937 842502

Email: plf_risalpur@yahoo.com

Website: www.pakrail.com

